

# Europeans' Strategic Research Agenda for spatial planning, land use and soil systems management



Coordination and Support Action

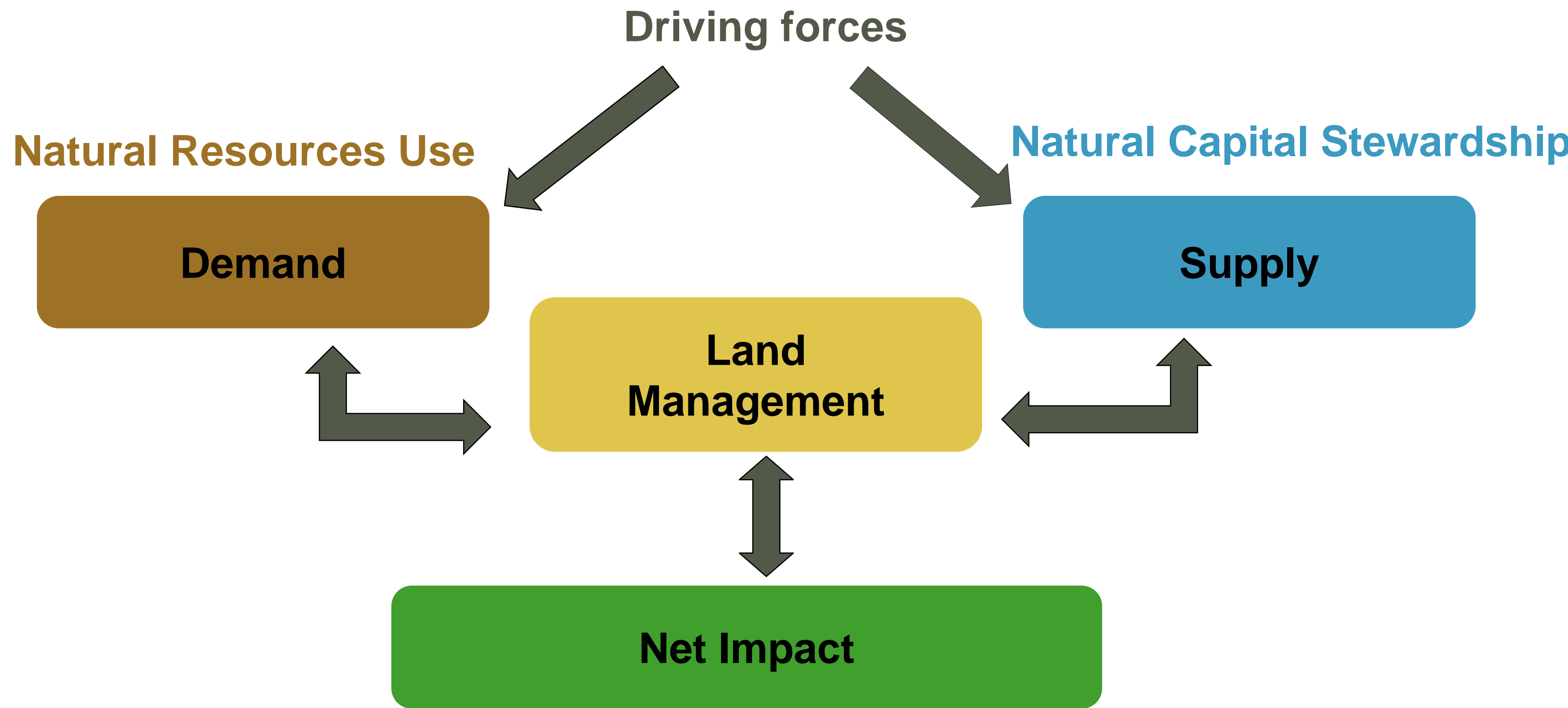
Paul Nathanail<sup>1</sup>, Sandra Boekhold<sup>2</sup>, Detlef Grimski<sup>3</sup> and Stephan Bartke<sup>3</sup>

<sup>1</sup> University of Nottingham, UK , <sup>2</sup> RIVM National Institute for Public Health and Environment, the Netherlands, <sup>3</sup> German Environment Agency, Germany

- Land and soil, including water and sediment, play a vital role in meeting societal challenges related to food, drinking water, energy, shelter, infrastructure, climate change, depletion of natural resources, health and environmental (in)justice.
- The EU Horizon 2020 INSPIRATION project developed a strategic research agenda (SRA), based on research and innovation needs identified by more than 500 European stakeholders working as funders, scientists, policy makers, public administrators and consultants.
- The SRA is designed to help public and private research funders identify research they should invest in to innovate and contribute to a smarter and more competitive, greener, more socially cohesive Europe.
- The SRA will help funders identify research activities on which they would like to collaborate in common (inter)national calls for research to create transnational co-funding.
- Support for funders by INSPIRATION partners will be available until August 2019.



Balancing Demand and Supply of natural capital, as influenced by land management, leading to net impacts

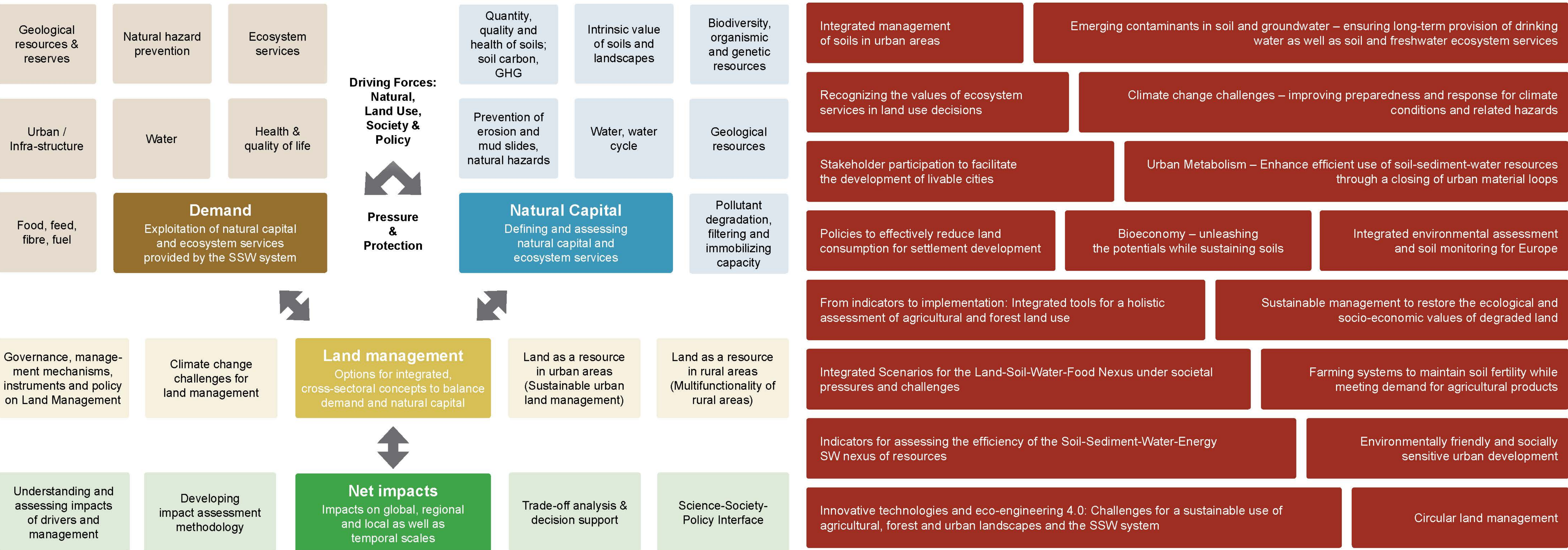


## Sustainable Development Goals

The stakeholder-driven research demands presented in this SRA map on to the 17 United Nations Sustainable Development Goals published in 2015 and will enable the European Commission and individual countries to achieve these SDGs through their policies, priorities and budgets.

## Bottom-up Demand-Driven Research Needs

Research needs were identified for **Natural Capital & Ecosystem Services Supply**, **Demand for Natural Capital & Ecosystem Services**, **Land Use Management** and **Net Impact** at different spatial & temporal scales. **Integrated needs** cut across these themes.



This project received funding from the European Union under HORIZON 2020 Grant Agreement No. 642372.

Contact INSPIRATION coordination: Stephan Bartke → [stephan.bartke@uba.de](mailto:stephan.bartke@uba.de) or Detlef Grimski → [detlef.grimski@uba.de](mailto:detlef.grimski@uba.de)

Internet: [www.inspiration-h2020.eu](http://www.inspiration-h2020.eu) | Twitter: @inspiration4eu



**INSPIRATION**  
INTEGRATED SPATIAL PLANNING, LAND USE  
AND SOIL MANAGEMENT RESEARCH ACTION